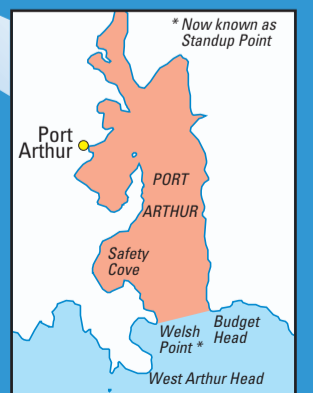
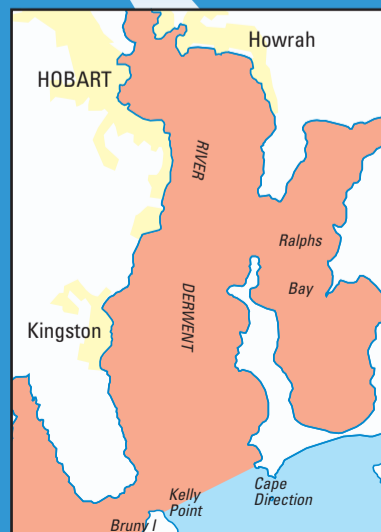
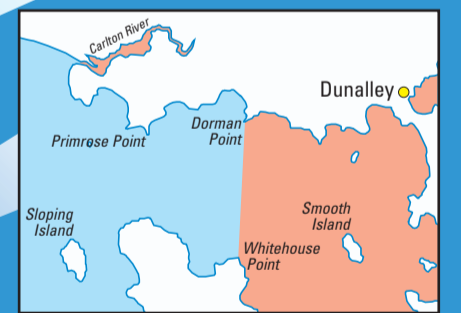
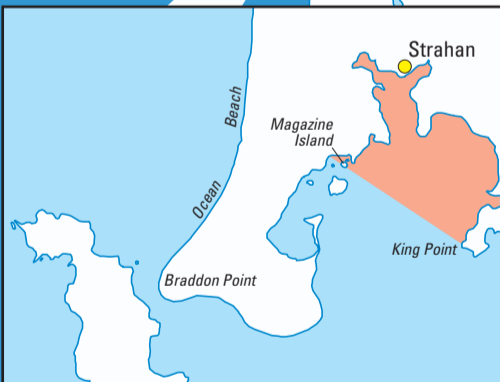
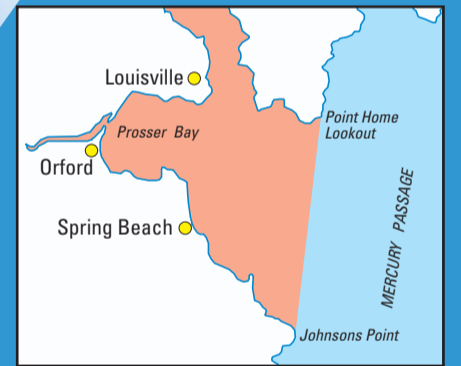
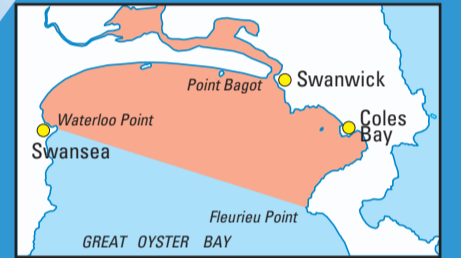
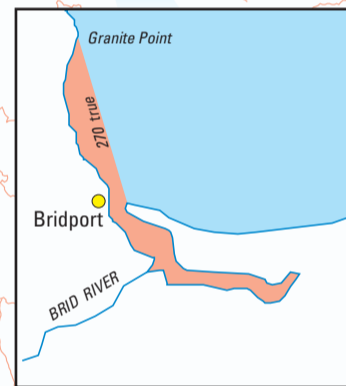
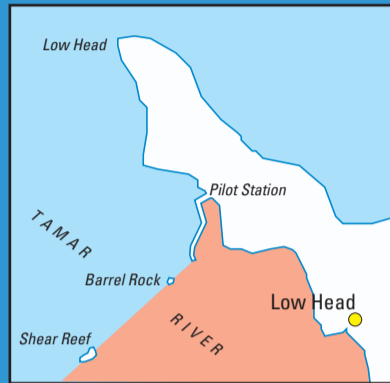


OPERATIONAL AREAS for vessels not used for commercial purposes

- Smooth waters**
includes all inland lakes and rivers
- Sheltered waters**
- Coastal waters**

To check what safety equipment is required for your vessel in Smooth, Sheltered or Coastal Waters, see the Equipment table.

- Sheltered waters are all waters not exceeding 2 nautical miles to seaward of land on the north and east coasts, unless otherwise specified in the MAST "Operational Areas" information sheet.
- Coastal waters are those beyond sheltered waters as well as waters on the west and south coasts between Cape Grim and South East Cape



Smooth waters include all inland lakes and rivers